
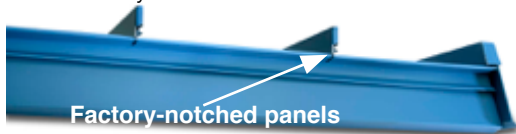




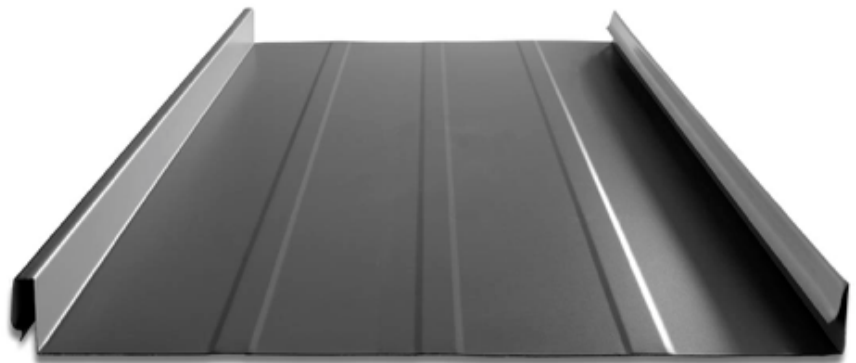
- 12" to 18" coverage options
- 24, 22 Tru-Gauge™ and .032 Aluminum
- Floating clip system: allows for expansion/contraction of panels in longer lengths
- 1 3/4" vertical rib, factory notching available
- Factory injected Butyl sealant available with testing
- Structural panel that will span up to 4'
- Concealed fasteners: fasteners cannot leak
- Manufactured in Sacramento, CA & Salem, OR
-  - Code compliance UL Evaluation Report UL ER 25913-01
- UL580 Class 90 wind uplift, UL Class A fire rated
- UL Construction No. 254, 255, 261, 303, 343, 414, and 508A.
- ASTM E-1592-Structural uniform static air pressure
ASTM 1646- Water infiltration
ASTM 1680- Air infiltration
- Weather tightness warranty available
(Contact TMP representative for details)
- 2:12 minimum pitch recommended: for lower pitches please inquire
- Standard panel lengths 2' to 65': for longer panels, please inquire
- Onsite roll forming available for longer panels
- Pan options: Flat pan, Accent ribs, Striations
- Retro-fit systems available



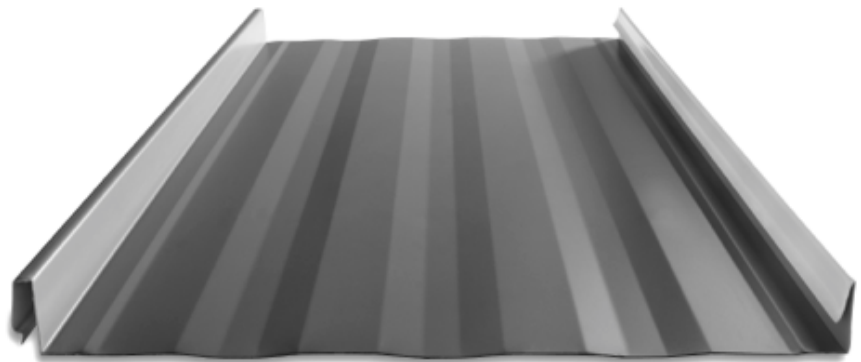
- Prevents crowning
- No visible screws required
- Sharp, professional appearance



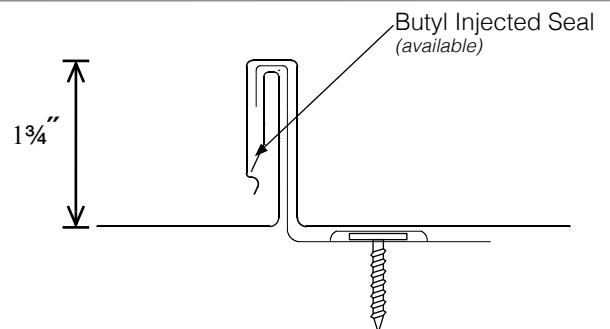
FLAT PAN
12" to 18" coverage options



ACCENT RIBS
2 Accent ribs for 12" to 14 1/2" panel
3 Accent ribs for 16" to 18" panel



STRIATED

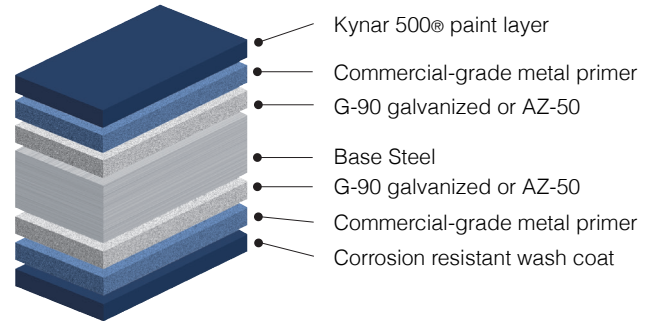


MATERIAL SPECIFICATIONS

- 24 gauge Kynar 500® Painted Steel .0236" (thickness prior to painting) G-90 Galvanized or AZ-50
- 24 and 22 gauge bare Zincolume® Plus with Clear Acrylic Coating-AZ-55
- ▲ 22 gauge Kynar 500® Painted Steel .029" (thickness prior to painting) G-90 Galvanized or AZ-50
- ◆ .032 Kynar 500® Painted Aluminum
- 24 gauge Bonderized (G-90)
- 22 gauge Rusteel™ (cold-rolled)
- 22 gauge Rusteel Plus™ (A606)
- 16 and 20 ounce Copper *please inquire*
- Kynar and substrate testing data available (See website)
- "Oil Canning" is an inherent characteristic of roof and wall products, and not a defect, which is not a cause for panel rejection

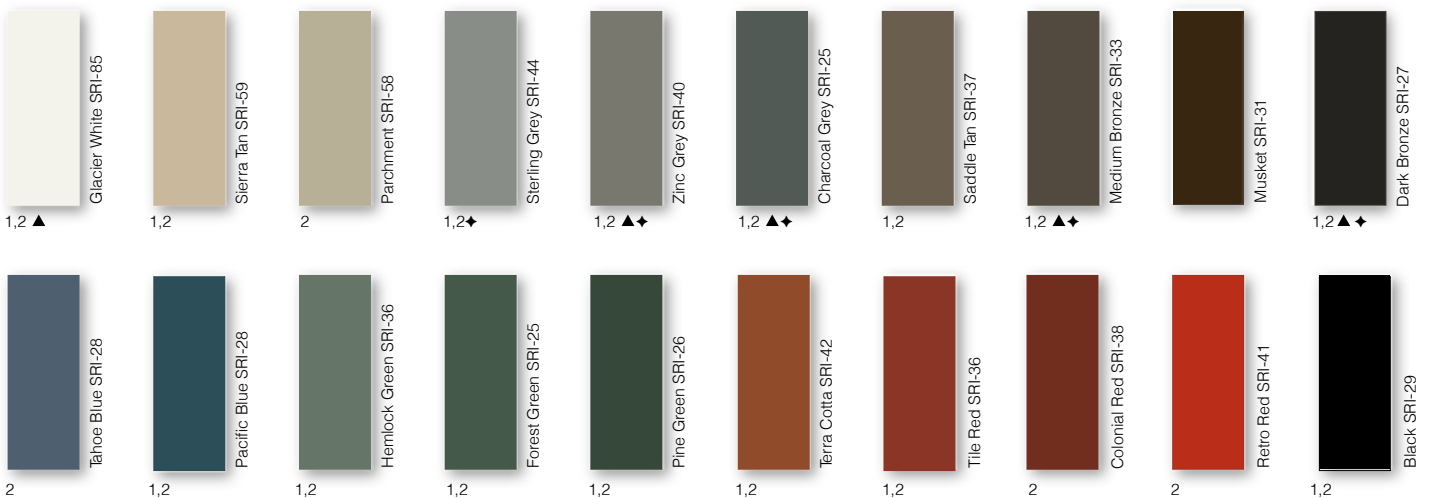
KEY FEATURES

- 20 Standard Colors, 5 Metallic Colors and 5 Specialized Colors
- Kynar 500® Paint System-the ultimate in exterior durability and color retention
- "Cool" color pigments are specially designed to reflect infrared light, reducing heat gain to dwelling, and conform with ENERGY STAR® criteria
- Superior quality, two-coat, 70% resin finish, applied at a 1 mil. thickness
- 40-year residential paint warranty
- 20 and 30 year commercial paint warranty: (Contact TMP for warranty specifications)

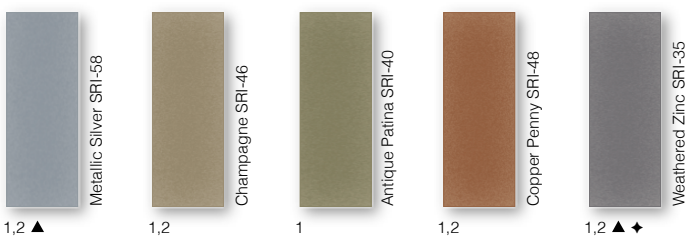


40-Year Residential/ 20 and 30 Year Commercial Manufacturer's Limited Warranty

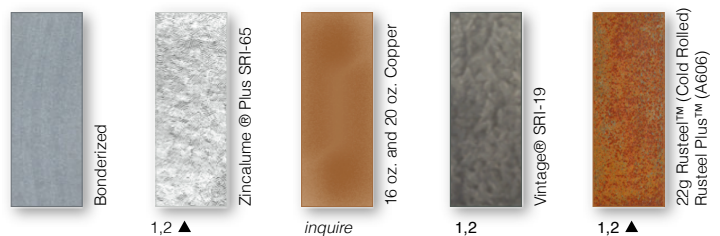
STANDARD 24g COOL KYNAR 500® COLORS



METALLIC COOL KYNAR 500® COLORS



SPECIALIZED MATERIAL



These printed chips provide a close representation of the colors.

Metal samples are available upon request.

Coatings are low gloss 10-15% sheen

"Oil canning" is an inherent characteristic of Roof & Wall product, not a defect, and is not a cause for panel rejection. SRI = Solar Reflective Index. SRI values listed above are in accordance with ASTM E 1980 and are based on actual testing.

Standard Panels				
Width	Gauge	Color	LBS SQFT	LBS LF
14 5/8"	24	1	1.36	1.65
18"	24	2	1.28	1.93
18"	22	▲	1.61	2.42
14 5/8"	.032 Alum	◆	.60	.90