
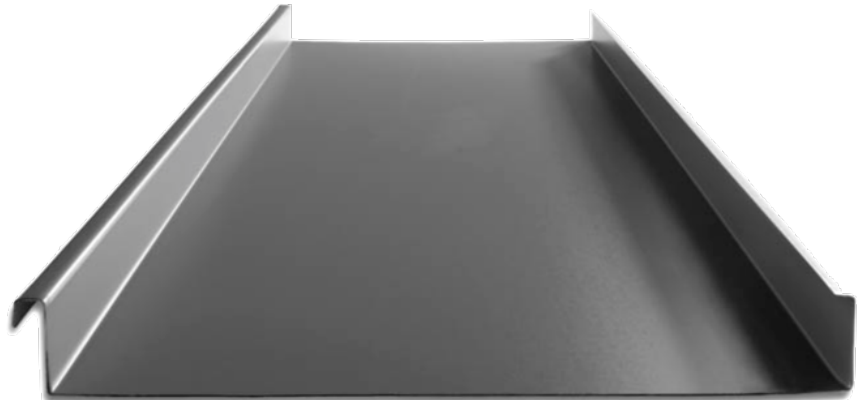




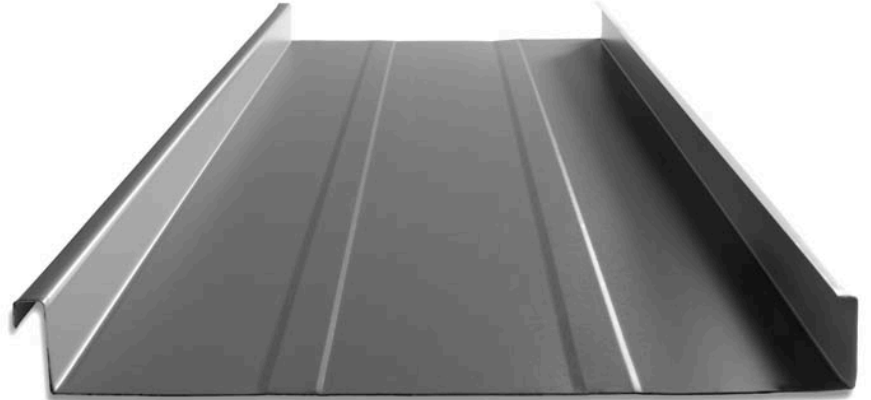
The MS-100™ is a mechanically seamed roof that is perfect for high wind areas and snow country. The butyl injected seam prevents water from entering the system, giving you a worry free roof for a lifetime.

KEY FEATURES

- 12" to 21" coverage options
- 26, 24 & 22 gauge Tru-Gauge™, .032 Aluminum and 24 gauge Bonderized (G-90)
- 16 & 20 oz. Copper
- Floating clip system: allows for expansion/contraction of panels in longer lengths
- 1" vertical rib
- Factory injected Butyl sealant
- Concealed fasteners: fasteners cannot leak
-  - Code compliance UL Evaluation Report UL ER 25913-01
- UL580 Class 90: Dade impact: Dade 90
Dade 140 MPH: UL Class 4 hail
- ASTM E-2140: ASTM-1646: ASTM 1680:
ASTM 283: ASTM 330: ASTM 331:
ASTM E-1592
- UL Class A fire rated
- UL Construction No. 554
- 1:12 minimum pitch recommended:
For lower panels, please inquire
- Standard panel lengths 2' to 65':
For longer panels, please inquire
- Onsite roll forming available
- Pan options: Flat pan, Accent ribs, Striations
- Retro-fit systems available



FLAT PAN
12" to 21" coverage options

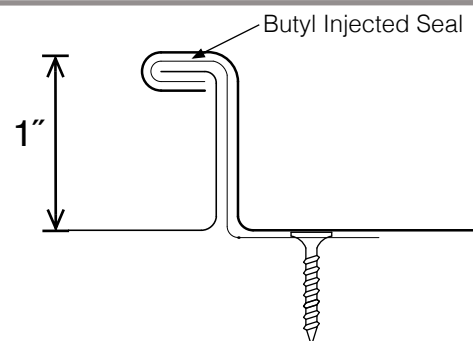


ACCENT RIBS

2 Accent ribs for 12" to 14 1/4" panel
3 Accent ribs for 16" & 21" panel



STRIATED

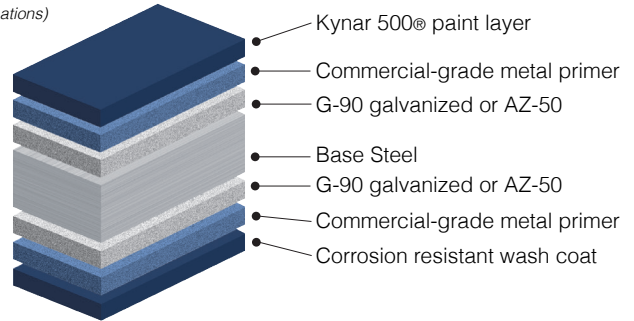


MATERIAL SPECIFICATIONS

- 26 gauge Kynar 500® Painted Steel .019" (thickness prior to painting) G-90 Galvanized or AZ-50
- 24 gauge Kynar 500® Painted Steel .0236" (thickness prior to painting) G-90 Galvanized or AZ-50
- 26, 24 & 22 gauge bare Zincolume® Plus with Clear Acrylic Coating-AZ-55
- ▲ 22 gauge Kynar 500® Painted Steel .029" (thickness prior to painting) G-90 Galvanized or AZ-50
- ◆ .032 Kynar 500® Painted Aluminum
- 24 gauge Bonderized (G-90)
- 16 and 20 ounce Copper
- Kynar and substrate testing data available (See website)

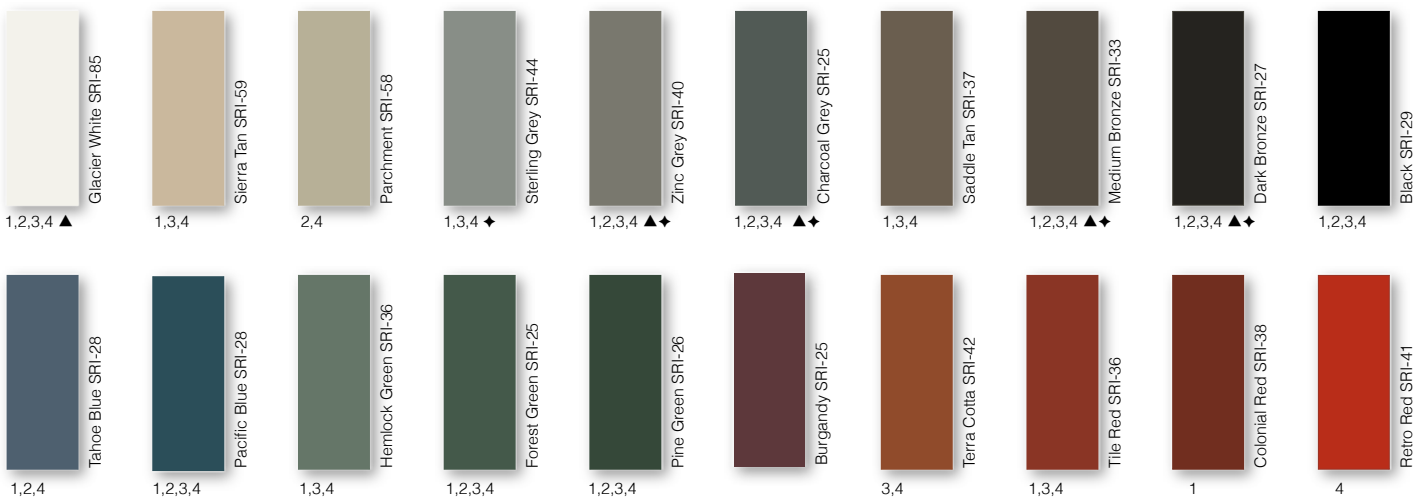
KEY FEATURES

- 20 Standard Colors, 5 Metallic Colors and 5 Specialized Colors
- Kynar 500® Paint System-the ultimate in exterior durability and color retention
- "Cool" color pigments are specially designed to reflect infrared light, reducing heat gain to dwelling, and conform with ENERGY STAR® criteria
- Superior quality, two-coat, 70% resin finish, applied at a 1 mil. thickness
- 40-year residential paint warranty
- 20 and 30 year commercial paint warranty: (Contact TMP for warranty specifications)

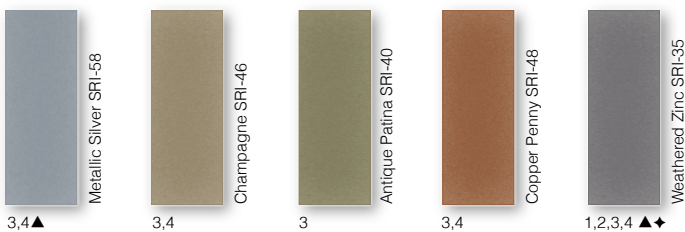


40-Year Residential/ 20 and 30 Year Commercial Manufacturer's Limited Warranty

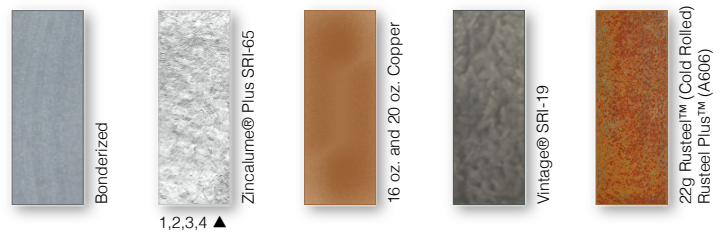
STANDARD 24g COOL KYNAR 500® COLORS



METALLIC COOL KYNAR 500® COLORS



SPECIALIZED MATERIAL



These printed chips provide a close representation of the colors. Metal samples are available upon request. Coatings are low gloss 10-15% sheen
****Oil canning is not a cause for material rejection****

Standard MS100 Panels				
Width	Gauge	Color	LBS SQFT	LBS LF
14"	26	1	.98	1.14
14"	24	2	1.15	1.34
17½"	24	3	1.11	1.65
21¼"	24	4	1.09	1.93
13¼"	22	▲	1.46	1.61
21¼"	22	▲	1.37	2.42
17½"	.032	◆	.52	.81