

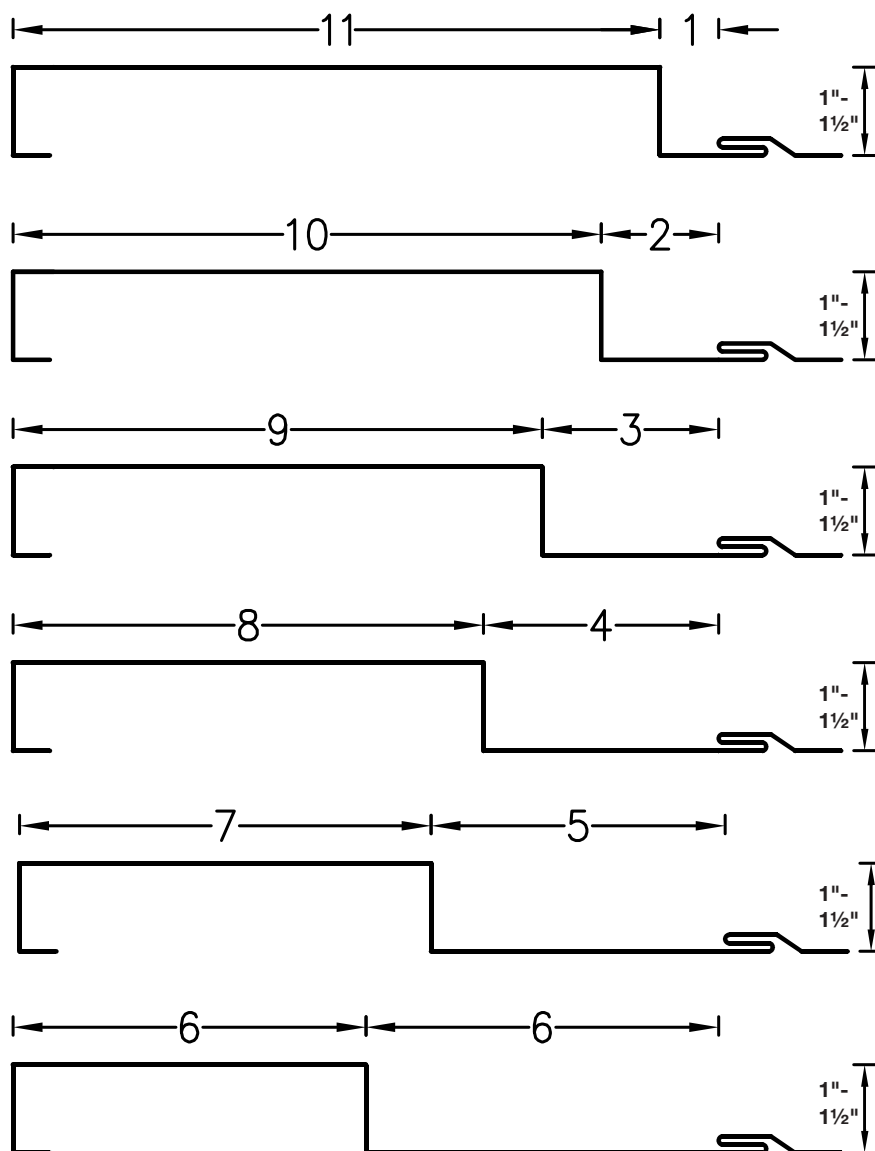
PANEL PROFILES



Reveal™ panels gives you various design options for your siding and soffits. Whether you are looking for clean consistent lines or want to mix and match different profiles. Either option will give your building a lifetime of elegance.

### KEY FEATURES

- 12" panel coverage
- 24 and 22 Tru-Gauge™ and .032 Aluminum
- 5' to 21' panel lengths
- Machine folded panel, helps to decrease "oil canning" in comparison to roll formed panels
- ASTM 283, ASTM 330, ASTM 331
- 1½" deep panel
- Reveals from 1" to 6" (custom reveals available)
- Use for vertical or horizontal wall applications
- Install on soffits
- Interchangeable with Contour Series™

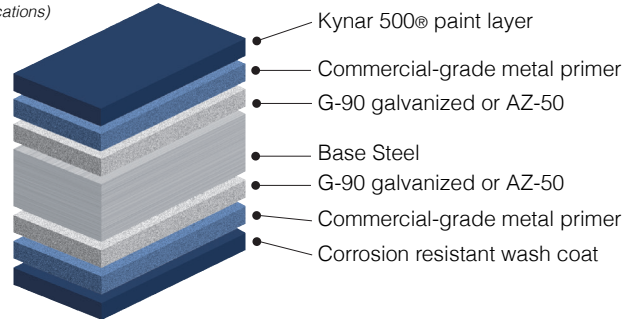


## MATERIAL SPECIFICATIONS

- 24 gauge Kynar 500® Painted Steel .0236" (thickness prior to painting) G-90 Galvanized or AZ-50
- 22 & 24 gauge bare Zincolume® Plus with Clear Acrylic Coating - AZ-55
- ▲ 22 gauge Kynar 500® Painted Steel .029" (thickness prior to painting) G-90 Galvanized or AZ-50
- ♦ .032 Kynar 500® Painted Aluminum
- 24 gauge Bonderized G90
- 22 gauge Rusteel™ (cold-rolled)
- 22 gauge Rusteel Plus™ (A-606)
- 16 and 20 ounce Copper
- Kynar® and substrate testing data available  
(See website)

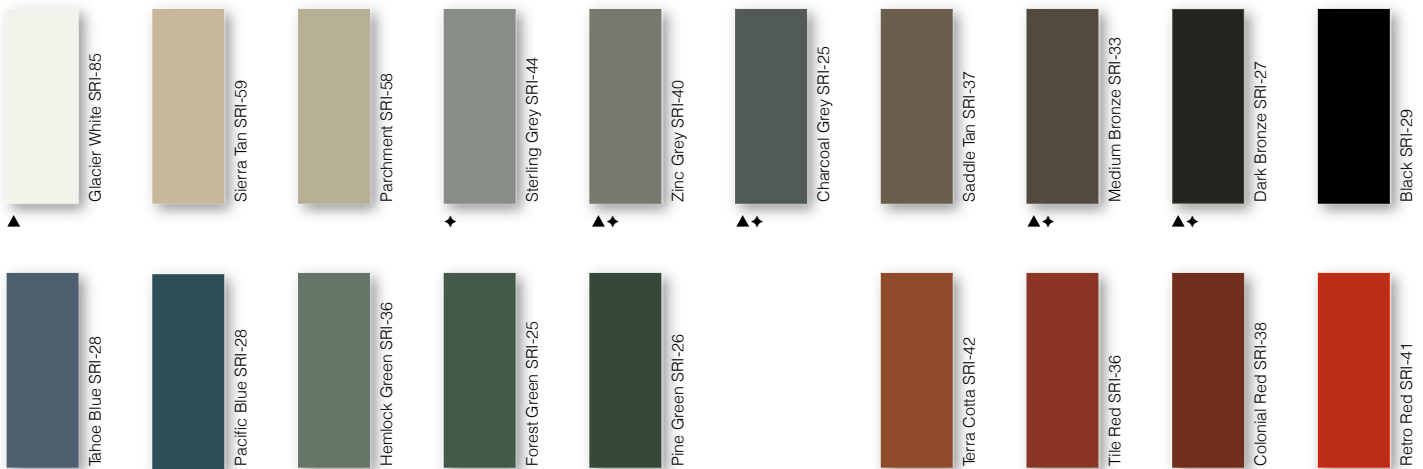
## KEY FEATURES

- 19 Standard Colors, 5 Metallic Colors and 5 Specialized Colors
- Kynar 500® Paint System-the ultimate in exterior durability and color retention
- "Cool" color pigments are specially designed to reflect infrared light, reducing heat gain to dwelling, and conform with ENERGY STAR® criteria
- Superior quality, two-coat, 70% resin finish, applied at a 1 mil. thickness
- 40-year residential paint warranty
- 20 and 30 year commercial paint warranty:  
(Contact TMP for warranty specifications)

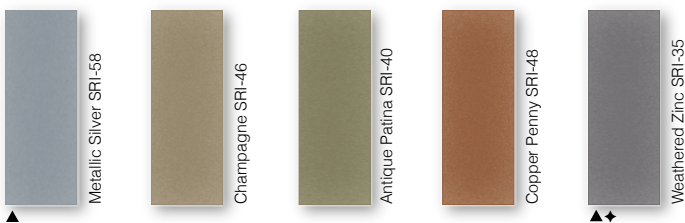


### 40-Year Residential/ 20 and 30 Year Commercial Manufacturer's Limited Warranty

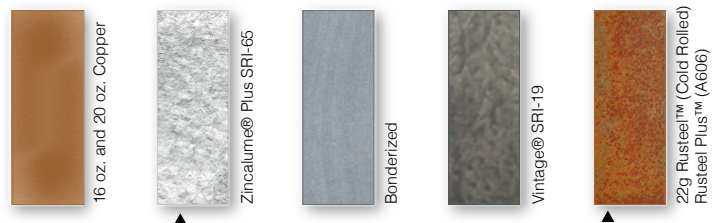
#### STANDARD 24g COOL KYNAR 500® COLORS



#### METALLIC COOL KYNAR 500® COLORS



#### SPECIALIZED MATERIAL



These printed chips provide a close representation of the colors. Metal samples are available upon request.

Coatings are low gloss 10-15% sheen

"Oil Canning" is an inherent characteristic of Roof & Wall products, not a defect, and is not a cause for panel rejection. SRI = Solar Reflective Index. SRI values listed above are in accordance with ASTM E 1980 and are based on actual testing.

Standard Panels				
Width	Gauge	Color	LBS SQFT	LBS LF
12"	24	Kynar	1.54	1.54
12"	22	▲	1.93	1.93
12"	.032	♦	1.81	2.42