

Berridge FW-12 Panel

Wall, Soffit and liner panel. Versatile and maintenance free. Prefinished vertical metal wall panels for open spans.

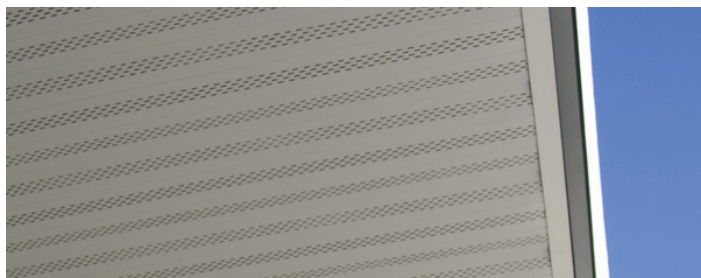
- Available in 24 & 22 gauge
- Hidden fasteners
- Flush appearance
- Multi-purpose panel
- Available with or without grooves
- Panel may be vented
- Stucco Embossing (Recommended for wall applications)
- Florida Product Approval
- Miami-Dade Approved



FW-12 soffit panel application



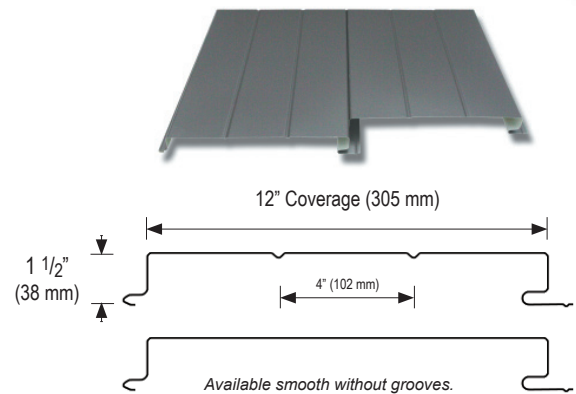
FW-12 wall and soffit panel application



Vented FW-12 Panel provides 7.79 square inches of Net Free Vent Area (NFVA) per square foot of panel (7.79 square inches per lineal foot). Note: Berridge Manufacturing Company does not recommend this product in applications subject to aggressive atmospheres, marine environments or high humidity due to the corrosive nature of these environments on raw edges of steel.



Berridge Manufacturing Company
6515 Fratt Road
San Antonio, Texas 78218
(800) 669-0009 • www.berridge.com



FW-12 PANEL SECTION PROPERTIES BASED ON 24 GAUGE 40 K.S.I.

FW-12 PANEL	I_x (in ⁴ /ft)	S_x (in ³ /ft)	M_A (FT·kips)
Positive Bending	0.0922	0.0710	1.70
Negative Bending	0.0582	0.0644	1.54

RECOMMENDED LOAD IN PSF PANEL WT = 1.40 p.s.f

SPAN (FT)	POSITIVE WIND LOAD (PSF)		
	1-SPAN	2-SPAN	3-SPAN
4'	94	86	100
5'	48d	55	64

NOTES:

1. All loads meet L/240 Deflection Criteria. (d) Deflection governs allowables.
2. Values based on 1996 edition of AISI and good engineering practices.

For specific job application recommendations, please contact Berridge Technical Department 1-800-231-8127.

SPECIFICATIONS

(Complete specifications available at www.berridge.com)

PRODUCT:

Furnish and install Berridge FW-12 wall and soffit system as manufactured by Berridge Manufacturing Company, San Antonio, Texas.

MANUFACTURE:

FW-12 provides a 12" coverage and a panel depth of 1-1/2". Panels are available from the factory in continuous lengths to a maximum of 40'-0". Panel is available with optional vee grooves spaced at 4" on center, optional stucco embossing or optional vented profile for soffit applications.

ENGINEERING:

Acceptable installation design over engineered framing or solid structural sheathing. Approved underlayment to cover sheathing, (run horizontally starting at the sill and run up the wall, review Berridge underlayment details for complete installation instructions).

MATERIALS, FINISH INFORMATION & CONSTRUCTION DETAILS:

Reference web site: www.berridge.com