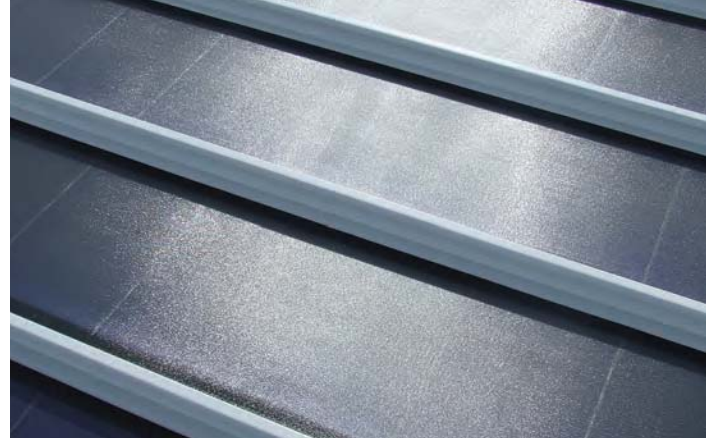
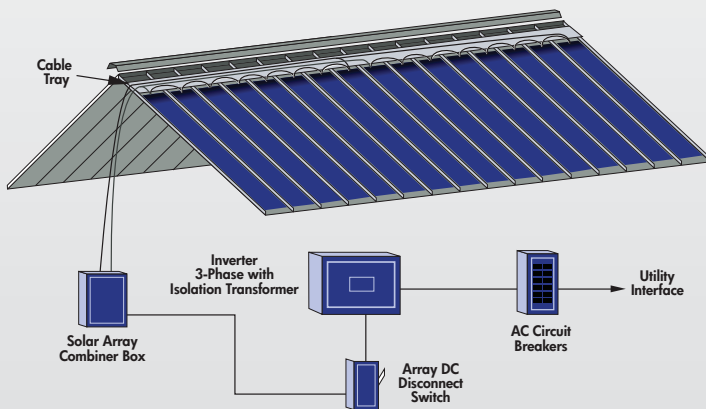


# ATA-SOLAR™



ATA-Solar is a building integrated photovoltaic (BIPV) system. The thin film laminate is applied to standing seam roofing. Once the standing seam panels are installed on the roof, the laminate wiring assembly is daisy-chained together, run through a cable tray to a master wire that will be run into the structure and connected to various electrical components to supply power to the building. The amount of power supplied varies based upon the size of system chosen (1.5kW, 2kW, 2.5kW, 3kW, 4kW, 5kW, 10kW, 15kW, 30kW, 60kW, 120kW and customized systems also available upon request), the latitudinal location of the building, any shading on the roof from buildings or vegetation, the slope and direction of the roof, and the overall amount of solar radiation supplied for a given day. It is important to note that the laminate is adhered to standing seam roofing panels in the ATAS plant in a controlled environment and then shipped out for installation by the contractor and electrician. ATAS will provide the schematics and specifications for wiring and electrical components.

ATA-Solar can be factory installed on three roof profiles; Dutch Seam (MRD194 only), 2 3/8" Field-Lok (FLS180 only), and 1 1/2" Field-Lok (FLM165 only).



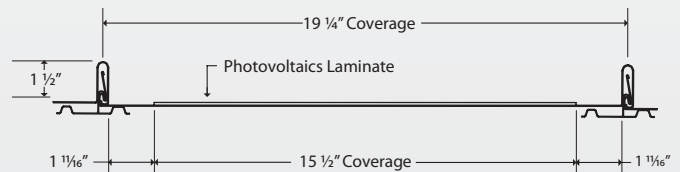
## Type: PVL-136

18'- 0" Long  
15.5" Wide  
0.2" Thick  
17 Pounds  
Rated Power: 136 Watt  
Operation Voltage: 33.0 Volt  
Operating Current: 4.13 Amp

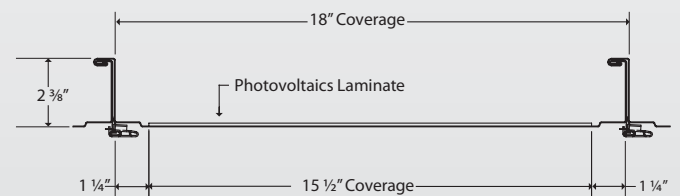
## Type: PVL-68

9'- 4" Long  
15.5" Wide  
0.2" Thick  
8.7 Pounds  
Rated Power: 68 Watt  
Operation Voltage: 16.5 Volt  
Operating Current: 4.13 Amp

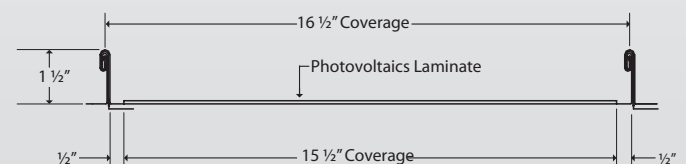
### MRD194



### FLS180



### FLM165



Consult local building codes for roof access requirements as they pertain to laminate layout.